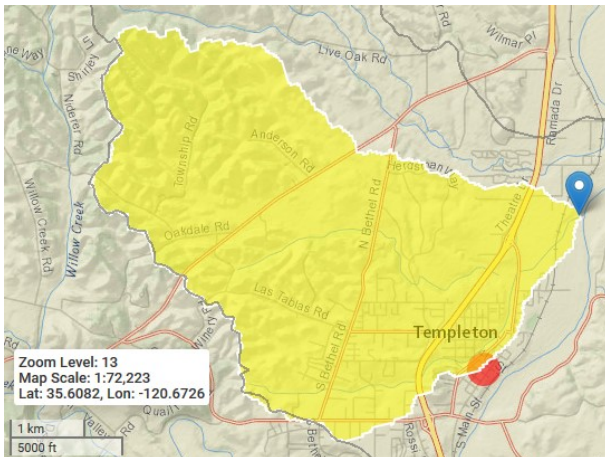


HOW DO I GET MORE INFORMATION?

If you would like more information on the program, you can contact the USLTRCD at admin@us-ltrcd.org or visit the USLTRCD's website (us-ltrcd.org) which will be updated with information on the program, including brochures that address each improvement, the surveys for landowners, as well as the self-assessments for businesses and individuals. The Templeton Area Advisory Group will also host these surveys.

If you would like a physical copy of the survey, self-assessment or any of the brochures, you can pick one up at the Upper Salinas-Las Tablas RCD office at 65 S Main St, Ste 107 in Templeton, CA.



Map of the Toad Creek Watershed in Templeton, CA

OTHER BROCHURES IN THIS SERIES

Appliances for Individuals

Commercial Appliances

Outdoor Improvements

Stewardship Guidelines



Upper Salinas-Las Tablas
Resource Conservation District
65 S Main St., Ste. 107
Templeton, CA 93426

Phone: (805) 434-0396
us-ltrcd.org

TOAD CREEK WATERSHED STEWARDS



Program Information



WHAT IS IT?

The Toad Creek program is designed to promote awareness about our local watershed and provide landowners and businesses with the necessary information to reduce their footprints. This program asks businesses and individuals to participate in self-assessments to evaluate the water conservation and stormwater mitigation improvements on their property, and the conservation behaviors they practice. Information about each improvement mentioned in the survey is provided in a series of brochures.

HOW DID IT START?

In 2014, the County of San Luis Obispo partnered with the Upper Salinas-Las Tablas Resource Conservation District (USLTRCD) to create a community approach to improve Toad Creek. Originally this project focused on community volunteers charged with maintaining given sections of the creek. Due to coordination and permitting issues, this approach was infeasible, and the program was redesigned into what it is today. A Creek Stewardship Manual was created during initial efforts and remains a useful guide for individuals interested in creek clean-up activities. The Manual is available on the USLTRCD's website.

WHO CAN PARTICIPATE?

The entire community of Templeton is encouraged to participate, not just landowners along the creek. While Toad Creek only runs through a portion of the town, the watershed that it draws water from covers the majority of Templeton. Businesses and individuals throughout Templeton are encouraged to participate to improve the health of our local watershed.



I'M A LANDOWNER ON TOAD CREEK-IS THERE ANYTHING ELSE FOR ME?

Yes, there is! There is a separate survey for Toad Creek landowners, asking about the issues they encounter living along the creek. All landowners are encouraged to complete this quick survey, available on our website, so we can pinpoint major problem areas along Toad Creek. With this information, the USLTRCD will be able to provide recommendations of priority areas for work along Toad Creek.

WHY SHOULD I PARTICIPATE AS A BUSINESS?

The USLTRCD is working with the Templeton Chamber of Commerce to create an outreach campaign related to this program. Once you have completed the self-assessment survey, you will be able to evaluate your strengths in watershed conservation and determine if you qualify as a Toad Creek Watershed Steward. There will be marketing materials associated with this certification, and the USLTRCD will assist any business wanting to improve their stewardship level by offering a limited number of free conservation consultations.

WHY SHOULD I PARTICIPATE AS AN INDIVIDUAL?

The USLTRCD can offer a limited number of free conservation consultations to individuals looking to improve their stewardship after taking the self-assessment. This consultation can provide assistance with evaluating what improvements would be most beneficial to individuals or help a landowner to install a specific improvement, such as a rain garden. The USLTRCD does not have the ability to fund these improvements, but there may be alternative funding sources, which will be listed on the USLTRCD's website.